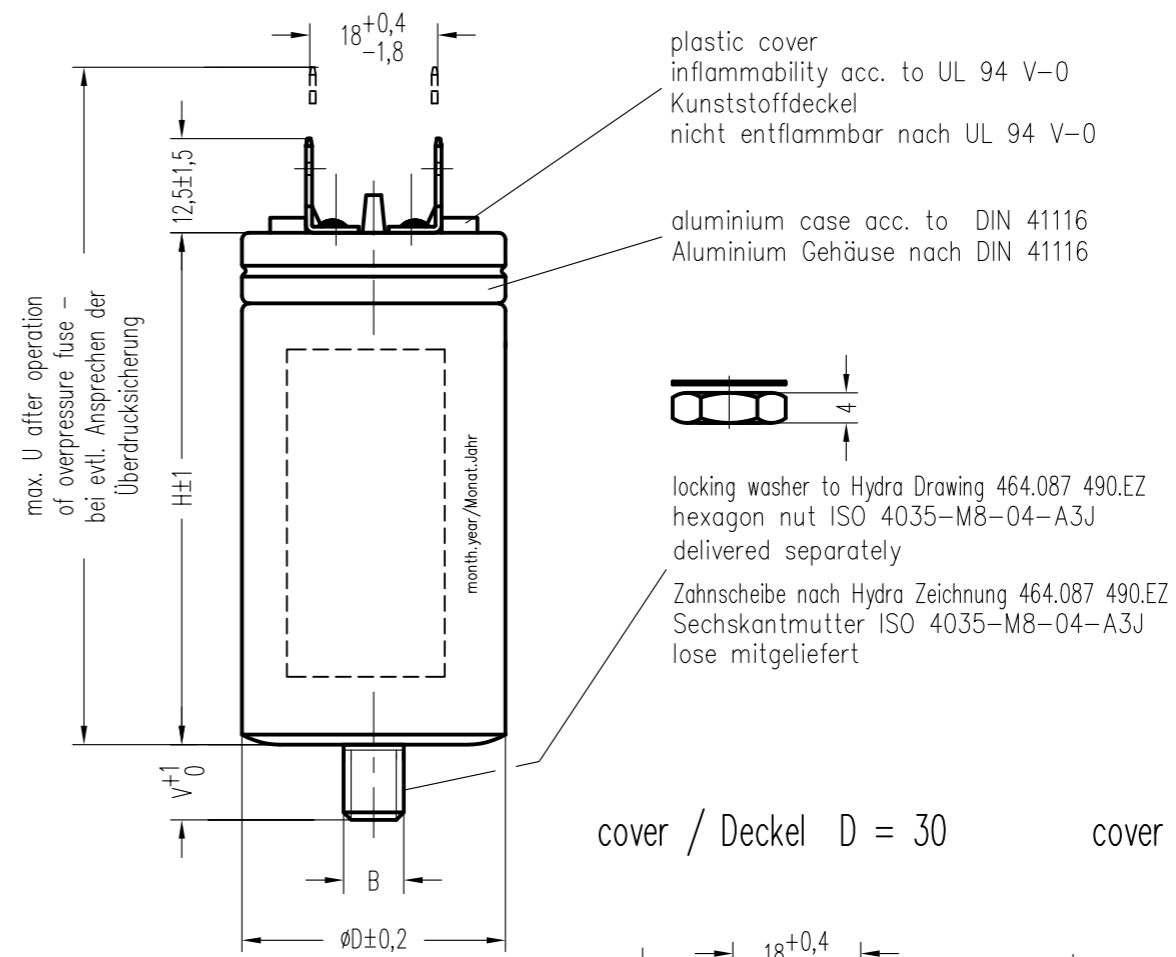
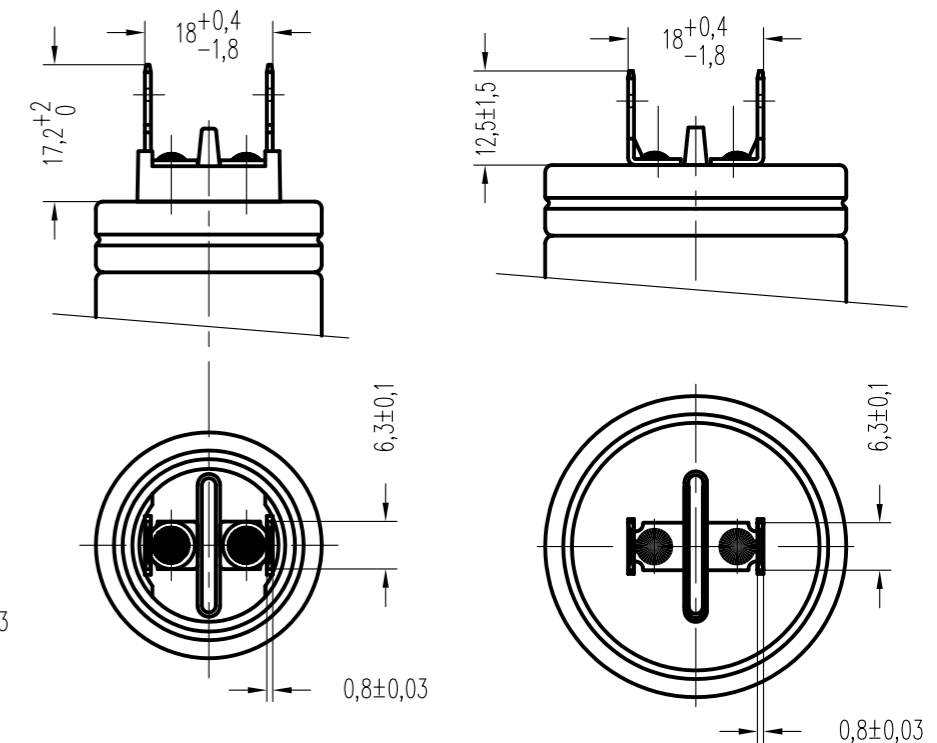


Hydra description	Cn [µF]	D	H	U	B	V
Hydra serie – Reihe 500						
MAB MKP 6/500II/42	6	30	58	85	8	10
MAB MKP 7/500II/42	7	30	68	95	8	10
MAB MKP 9/500IV/42	9	35	68	90	8	10
MAB MKP 10/500I/42	10	35	68	90	8	10
MAB MKP 13/500/42	13	35	78	100	8	10
MAB MKP 14/500II/42	14	35	78	100	8	10
MAB MKP 18/500I/42	18	40	78	100	8	10
Hydra serie – Reihe 321						
MAB MKP 20/321/42	20	35	78	100	8	10
MAB MKP 30/321IV/42	30	45	73	95	8	10
MAB MKP 40/321II/42	40	50	83	105	12	12
MAB MKP 55/321I/42	55	50	103	125	12	12

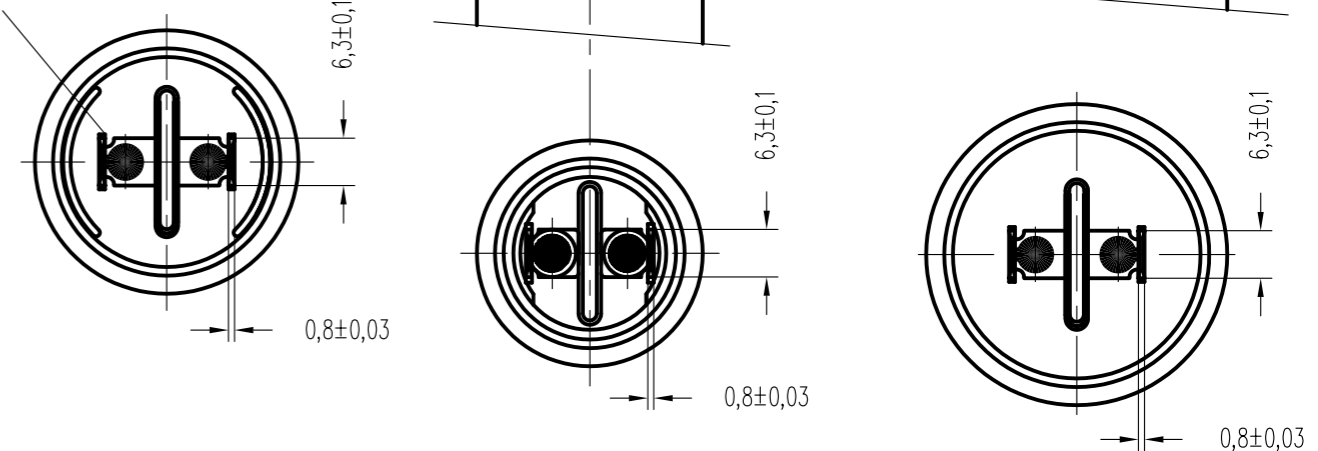


cover / Deckel D = 30      cover / Deckel D > 35



cover / Deckel D = 35

single tags / Flachstecker  
A 6,3x0,8 DIN 46244



printing – marking in black colour / stempeln – Beschriftung in schwarzer Farbe

printing for Hydra serie – Reihe 500

printing for Hydra serie – Reihe 321

MAB MKP 6/500II/42  
MKP 6 µF ± 5%  
470V AC 30000h/KI A  
500V AC 1000h/KI D  
-25/85/21 50/60Hz

MAB MKP 7/500II/42  
MKP 7 µF ± 5%  
420V AC 30000h/KI A  
470V AC 10000h/KI B  
500V AC 1000h/KI D  
-25/85/21 50/60Hz

MAB MKP 9/500IV/42  
MKP 9 µF ± 5%  
420V AC 30000h/KI A  
470V AC 10000h/KI B  
500V AC 1000h/KI D  
-25/85/21 50/60Hz

MAB MKP 20/321/42  
MKP 20 µF ± 5%  
280V AC 10000h/KI B  
-25/85/21 50/60Hz

MAB MKP 30/321IV/42  
MKP 30 µF ± 5%  
280V AC 10000h/KI B  
-25/85/21 50/60Hz

MAB MKP 10/500I/42  
MKP 10 µF ± 5%  
420V AC 30000h/KI A  
470V AC 10000h/KI B  
500V AC 1000h/KI D  
-25/85/21 50/60Hz

MAB MKP 13/500/42  
MKP 13 µF ± 5%  
420V AC 30000h/KI A  
470V AC 10000h/KI B  
500V AC 1000h/KI D  
-25/85/21 50/60Hz

MAB MKP 14/500II/42  
MKP 14 µF ± 5%  
420V AC 30000h/KI A  
470V AC 10000h/KI B  
500V AC 1000h/KI D  
-25/85/21 50/60Hz

MAB MKP 18/500I/42  
MKP 18 µF ± 5%  
420V AC 30000h/KI A  
470V AC 10000h/KI B  
500V AC 1000h/KI D  
-25/85/21 50/60Hz

MAB MKP 40/321II/42  
MKP 40 µF ± 5%  
280V AC 10000h/KI B  
-25/85/21 50/60Hz

MAB MKP 55/321I/42  
MKP 55 µF ± 5%  
280V AC 10000h/KI B  
-25/85/21 50/60Hz

				Freimasstoleranzen	Oberflächen	Masstab: 1:1 (für Typ 35x68)
						Werkstoff:
				Datum	Name	MKP-SI-Motorkondensator MAB MKP Cn/500-321/42
				Bearb. 23.7.2015	Chrtek	
				Gepr.		
				Norm.		
				<b>HYDRA</b>		464.177 718.TD
Zust.	Aenderung	Datum	Name	Norm.	Urspr.:	Blatt
						Ers. f.:
						Ers. d.: